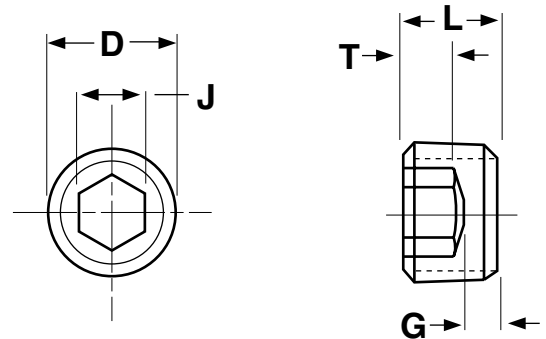




# Socket Products

## Socket Pipe Plugs



Nominal Size	D	Threads Per Inch	J	T	G	L		Tightening Torque (Inch - Lbs)	Tap Drill Size*
	Nominal Outside Diameter		Hex Socket Size	Key Engagement	Wall Thickness	Overall Length			
						Min	Min		
1/16	0.3120	27	5/32	.1400	.0620	.3240	.3000	150	15/64
1/8	0.4050	27	3/16	.1400	.0620	.3240	.3000	250	21/64
1/4	0.5400	18	1/4	.2180	.0730	.4570	.4170	600	27/64
3/8	0.6750	18	5/16	.2500	.0840	.5200	.4800	1200	9/16
1/2	0.8400	14	3/8	.3120	.0950	.5820	.5420	1800	11/16
3/4	1.0500	14	9/16	.3120	.1250	.6450	.6050	3000	57/64
1	1.3150	11-1/2	5/8	.3750	.1250	.7700	.7300	4200	1-1/8
1-1/4	1.6600	11-1/2	3/4	.4370	.1560	.8320	.7920	5400	37.5MM
1-1/2	1.9000	11-1/2	1	.4370	.1560	.8430	.7800	6900	43.5MM
2	2.3750	11-1/2	1	.4370	.1560	.9060	.8440	8500	2-3/16

\*Taper reaming after drilling is recommended for tapping ease and to give fully formed, uniform threads.

Per ANSI B1.20.3

**The value-added source for quality bolts, screws, nuts, washers and other industrial fasteners.**

3211 West 9th Street, Trainer, PA 19061-5242 TOLL FREE: 1-800-662-7459 LOCAL: 610-485-5700 FAX: 610-485-5877

E-MAIL: [sales@coburnmyers.com](mailto:sales@coburnmyers.com)